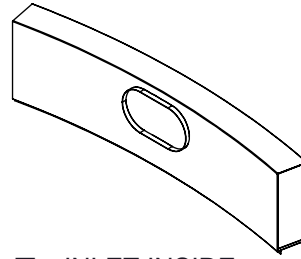
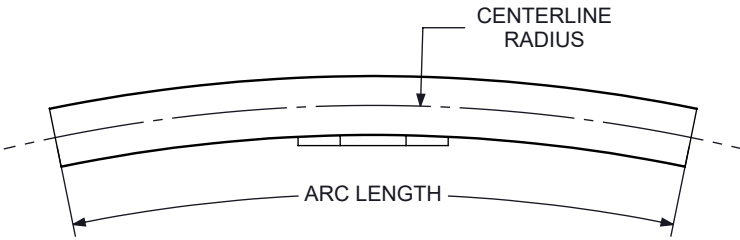
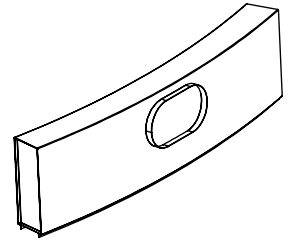
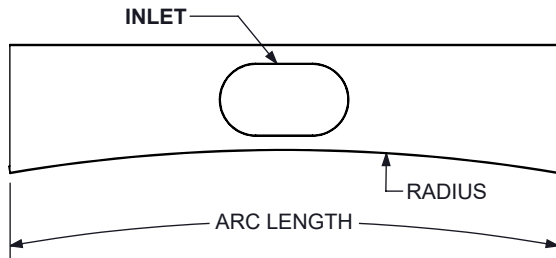
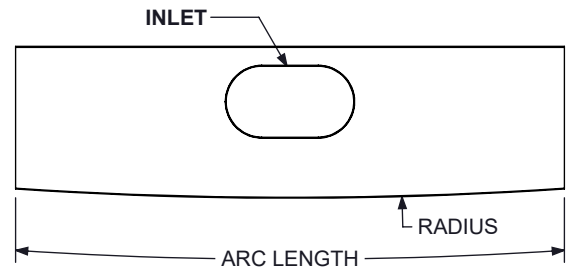


CURVED 1900BOOT - 1900 PLENUM
 1900 PLENUM BOOT

SUBMITTAL SHEET
CURVED STYLE:
 CURVED

 INLET INSIDE OF CURVE

 INLET OUTSIDE OF CURVE

 CONCAVE

 CONVEX

FRAME STYLE :

-
- A
-
-
- B
-
-
- C
-
-
- D
-
-
- E
-
-
- F
-
-
- I
-
-
- J
-
-
- M

SLOTS :

-
- 1 SLOT
-
-
- 2 SLOT
-
-
- 3 SLOT
-
-
- 4 SLOT
-
-
- 5 SLOT
-
-
- 6 SLOT
-
-
- 7 SLOT
-
-
- 8 SLOT

INLET :

-
- 06 - 6" OVAL
-
-
- 08 - 8" OVAL
-
-
- 10 - 10" OVAL
-
-
- 12 - 12" OVAL
-
-
- CUSTOM OVAL _____
-
-
- CUSTOM ROUND _____

SLOT WIDTHS :

-
- 50 - 1/2"
-
-
- 75 - 3/4"
-
-
- 10 - 1"
-
-
- 15 - 1.5"
-
-
- 20 - 2"

INSULATION :

-
- 0 - NO INSULATION
-
-
- H - 1/4" FIBERGLASS
-
-
- Y - 1/4" FIBER FREE

END BORDER :

-
- BUTT CUT
-
-
- END PLATES
-
-
- END CAPS

FINISH :

-
- 01 - MILL

CUSTOM HEIGHT: _____

ARC LENGTH : _____

RADIUS : _____

NOTES :

- PLENUM IS MILL FINISH 24 GA GALVANIZED STEEL
- MINIMUM ARC LENGTH IS 12", MAXIMUM ARC LENGTH IS 72"
- USE CURVING REQUEST EXCEL SHEET LINK FOR CALCULATOR AND ORDERING
- REFERENCE WEBSITE SUBMITTAL FOR UNPROVIDED DIMENSIONS
- PLENUM HEIGHT MUST BE 2" GREATER THAN ROUND INLET SIZE
- REFERENCE SUBMITTAL DS0711 FOR DIMENSIONS NOT SHOWN

 KRUEGER
 CURVING
 REQUEST
 FORM

DIMENSION ARE GIVEN AS INCHES [MM]

 Revision Date: **5/15/2024**

 Form: **DS0718**

 Replaces: **NEW SUBMITTAL**

Product Information is Subject to Change Without Notice